



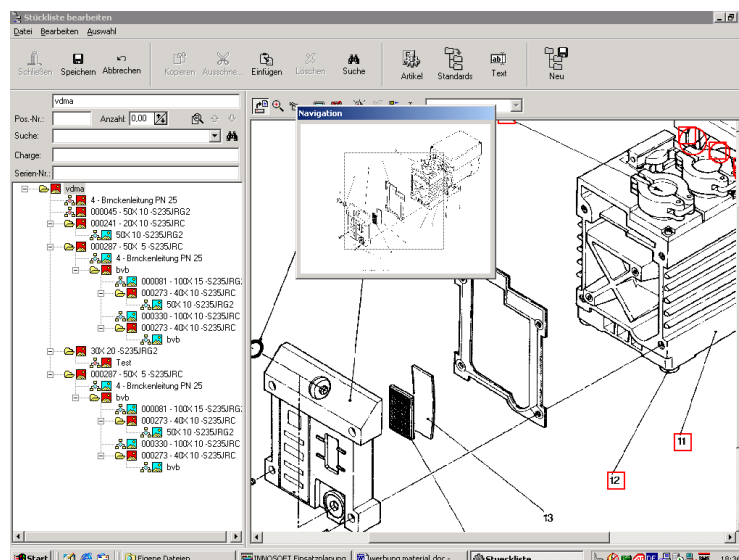
Materials Management

Functions

- Compilation of assembly group and order parts lists
- Management of several storage locations, even mobile stocks
- Development of an article history
- Allocation of images or instructions to individual articles and/or assembly groups
- Ordering system
- Incoming goods / outgoing goods
- Inventory (stocktaking)
- Access to order parts lists in the proposal system

Benefits

- Error tracking on articles through allocation of parts, serial and batch number
- Linking of parts list and drawing
- Creation of electronic spare parts catalogues
- Up-to-date inventory overview during assignment planning or order processing
- Documents can be deposited to the articles
- Various details can be recorded to each article and each parts list position, in order to fully classify the component part
- The warehouse management system supports the dealing with complete parts lists in the incoming and outgoing goods departments, i.e. all parts of a parts list are being itemized and managed in the warehouse



Materials Management

Article and parts list management:

One important function of the **INNOSOFT Materials Management** is the acquisition of all article data with compilation of various price lists including the graduation of prices and allocation of different suppliers. The articles can be sorted and combined to groups, the integrated search function allows a quick locating of individual articles. Various graduated price scales for purchase and selling prices – organized according to quantity and calendar date – can be set up for each article. In addition, various suppliers with corresponding price scales are being acquired. In order to develop a history serial and batch numbers, which allow a definite identification, can be allocated to the articles and assembly groups.

the storage area is also distinguished by the geometrical measurements respectively a fixed article allocation. The mobile (“rolling“) stocks of the field representatives can also be managed as a store. The delivered articles and assembly groups are captured and booked in the goods receiving. The program distinguishes, whether it is the case of an order, a complaint or rental parts. Rejected parts or assembly groups are being sent to the workshop control together with the claim report. In the goods issue the delivery notes are printed out and the bookings are made which are necessary for the stock rotation and account rendering. When the minimum inventory is reached the system automatically generates an order list and releases – after the approval by the person responsible – the necessary order letters to the suppliers.

Electronic parts catalogue:

Several articles and assembly groups can be combined to a parts list with the electronic parts catalogue, using the graphical support of exploded view drawings. It is possible to store one or more graphics to each parts list, where individual parts list parts can be directly connected to the graphic.

Order data:

Each parts list can be purposefully allocated to one or more orders. By this allocation it is possible to make reservations for individual parts or complete assembly groups directly from out of the parts list and/or the corresponding graphic or from the article list. The parts which have been booked this way are directly being recorded by the ordering system.

Warehouse management:

The complete inventory can be subdivided into several stores, which again consist of several storage locations. Apart from the storage location

INNOSOFT GmbH

Martin-Schmeißer-Weg 15
D-44227 Dortmund
Germany

Phone: +49 (0) 231 – 427 885 0
Fax: +49 (0) 231 – 427 885 29
E-Mail: info@innosoft.de
Internet: www.innosoft.de